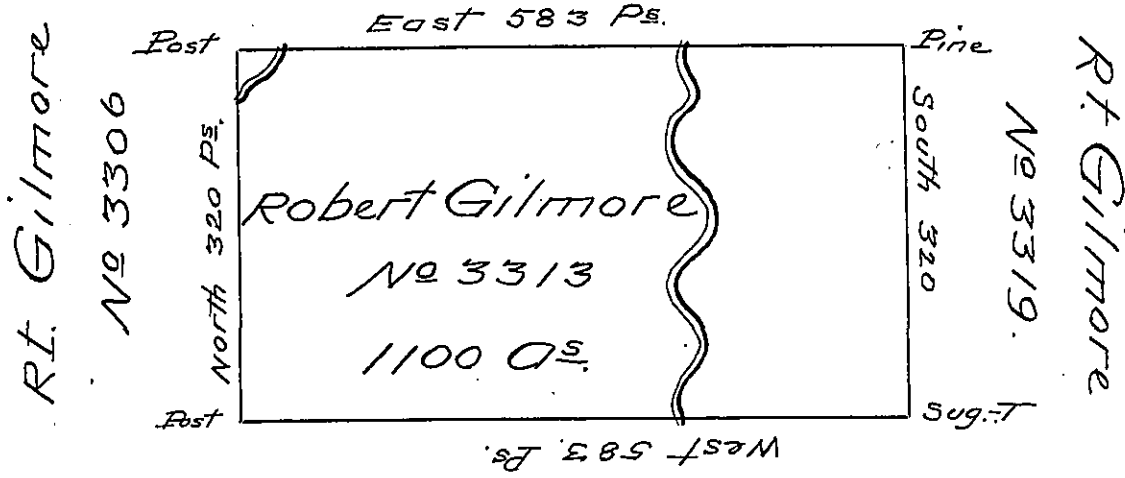


Robt. Gilmore

No 3316.



Robt Gilmore

No 3310.

Situate on the Middle Branch of
 Ischunungwandt five Miles South of the
 State Line in the last Purchase District
 No 4. Surveyed July the third 1793 in
 Pursuance of a Warrant to Robert Gilmore
 No 3313 Dated the fourteenth day of Decem-
 ber 1792 for 1000 acres

Containing Eleven hundred Acres and the
 usual allowance of Six Pr Ct for Roads.

Pr James Hunter D.S.

To Daniel Brodhead Esqre S.G.

July 3d.

IN TESTIMONY that the above is a copy of the original remaining on file in
 the Department of Internal Affairs of Pennsylvania, made
 conformably to an Act of Assembly approved the 16th day of
 February, 1833, I have hereunto set my Hand and caused
 the Seal of said Department to be affixed at Harrisburg,
 this Twenty sixth day of October 1904.

James P. Ross
 Secretary of Internal Affairs.